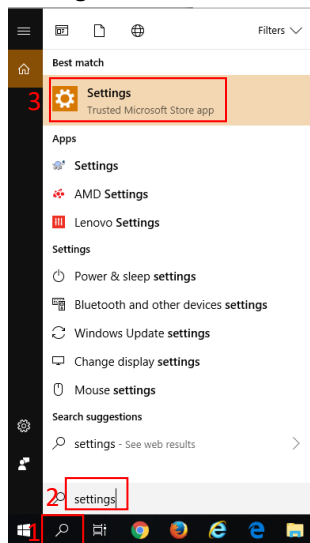
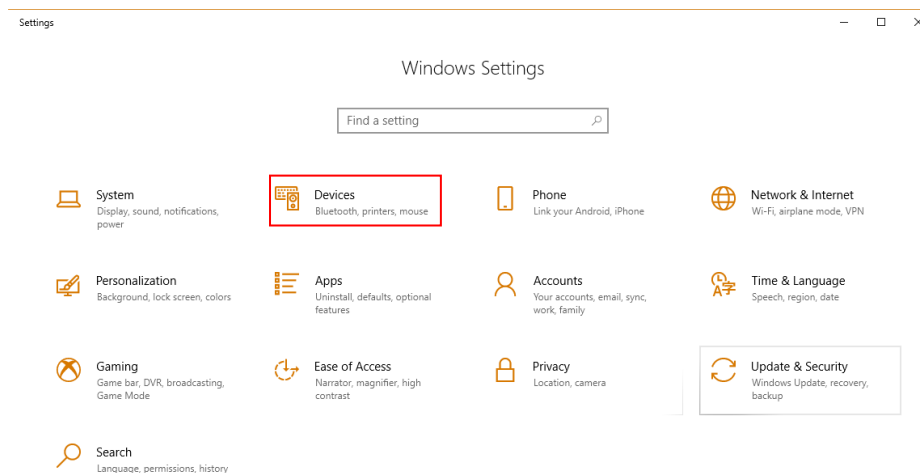


Turn on the Bluetooth handheld device, it will be discoverable as HL7202K8-*****.

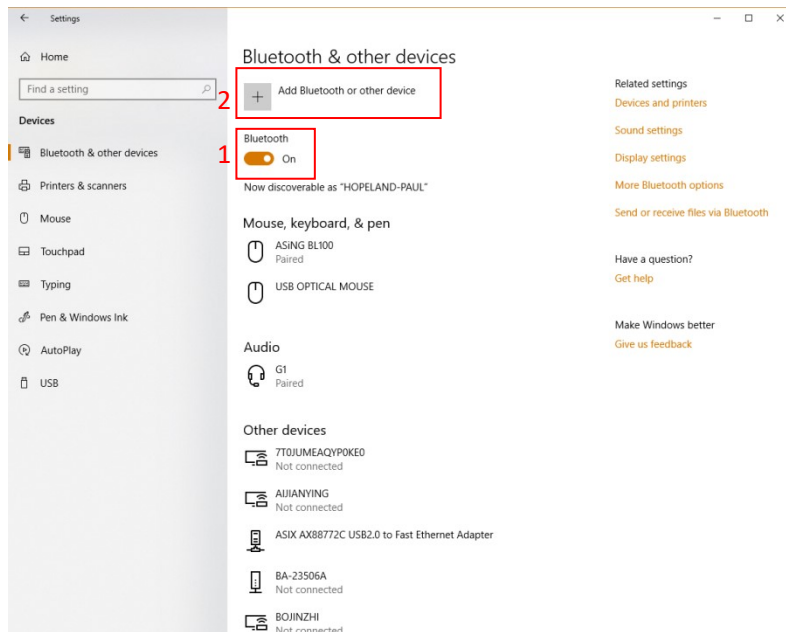
In Windows10, click the search icon, input Settings, and click the Settings icon to enter Windows Settings.



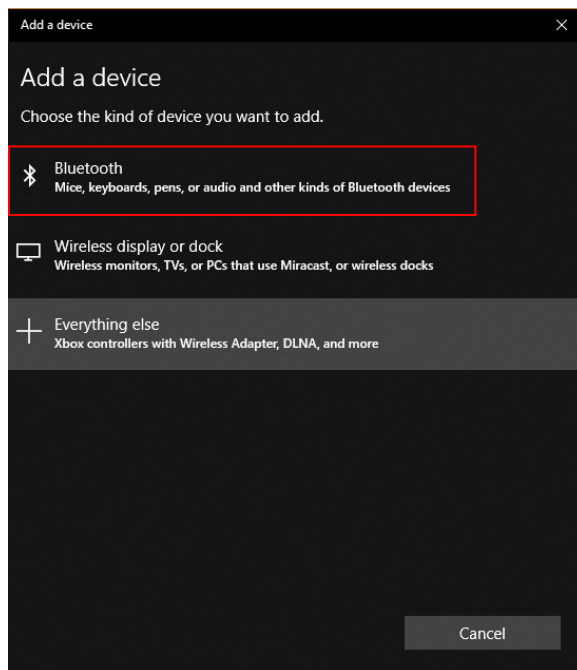
Click Devices icon.



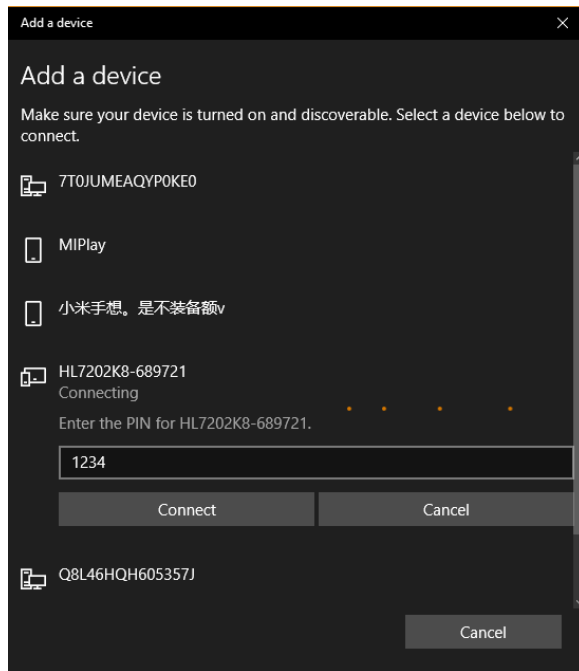
Turn on Bluetooth function, and click Add Bluetooth or other device.



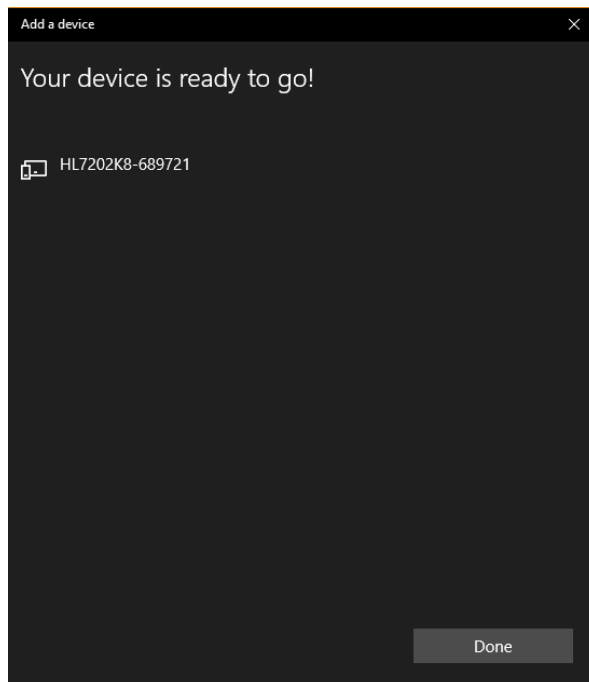
Click add Bluetooth device



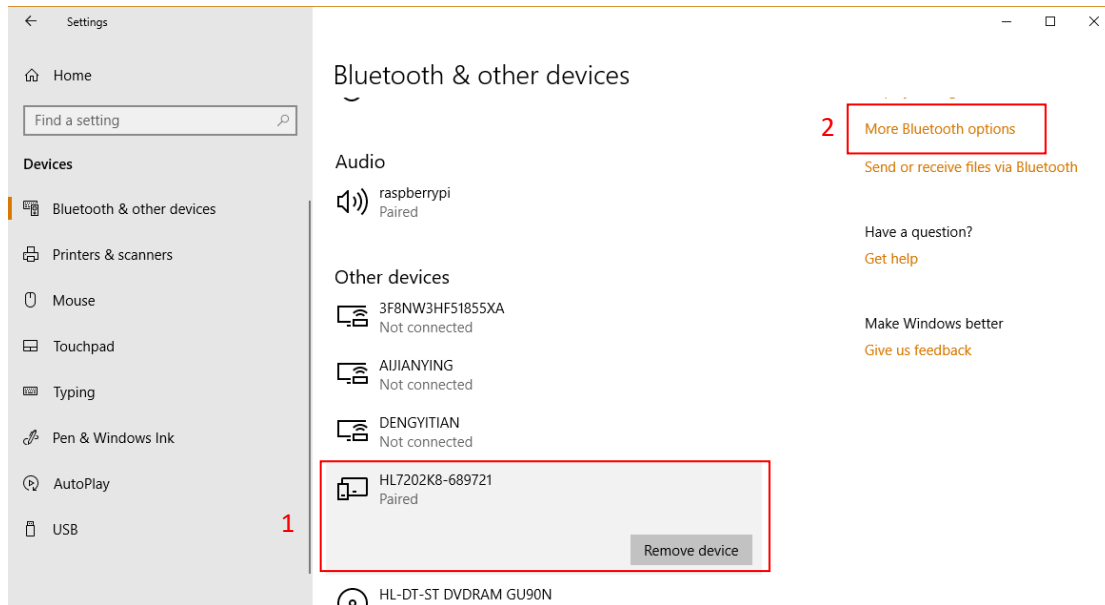
When HL7202K8-***** appears, click its name, then a request for a PIN code appears, input 1234, click Connect.



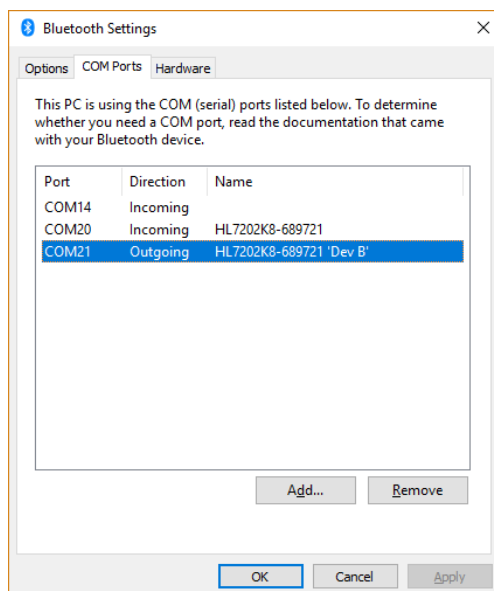
Paired successfully.



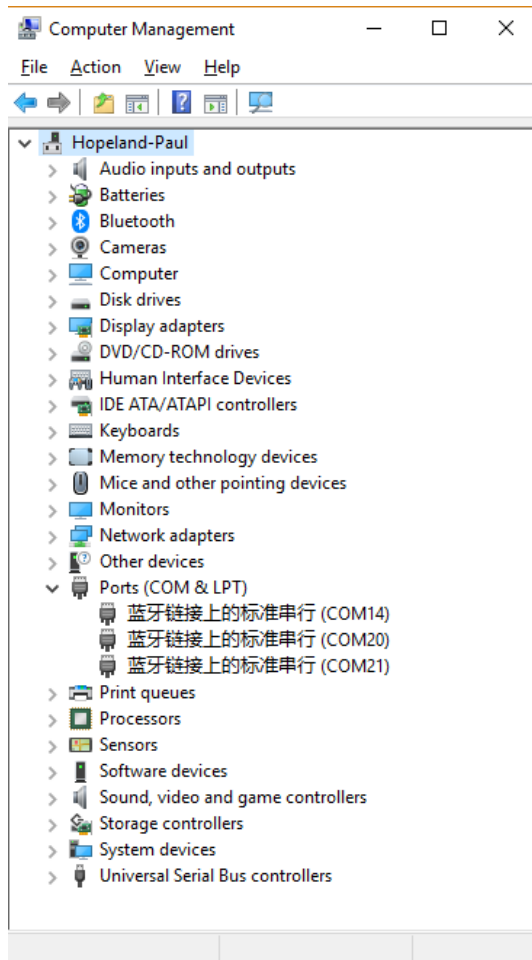
Back to Bluetooth & other devices interface, select HL7202K8-*****, then click More Bluetooth options on the right side.



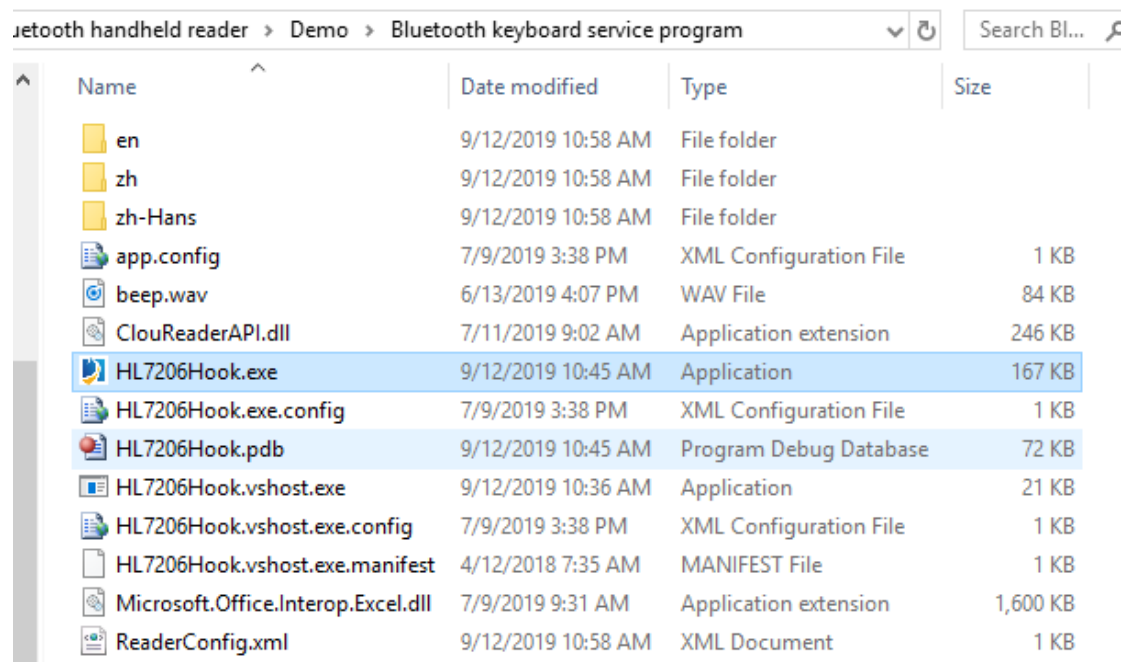
The Bluetooth Settings interface appears, using the Outgoing serial port to connect the reader with the software.



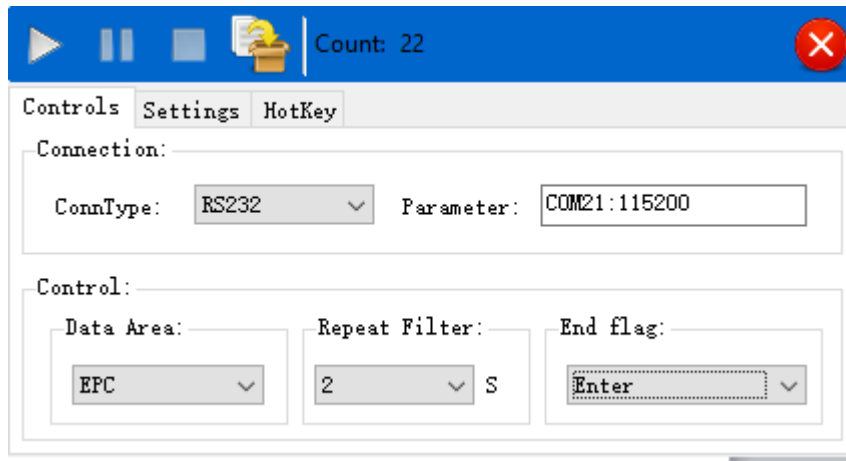
Bluetooth related serial port information displayed in the device manager interface.




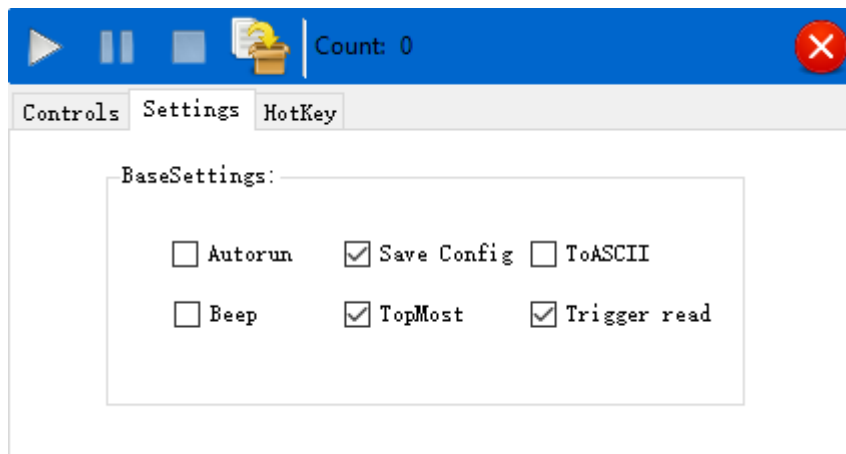
Double click HL7206Hook.exe to execute it.




Set the connection type as RS232, the connection parameter as Bluetooth serial port number, set the data area of output, repeat tag data filtering time, and end content of each tag data.



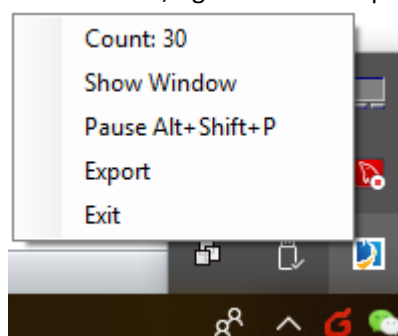
then click  , the software will connect to the Bluetooth handheld



After click  , the software will run background.



In the taskbar, right click on the program icon, you can carry out related operations.



Switch the input method to English.

Press the trigger to read tags, and the data can be output to the computer in real time like the keyboard.

The following data uploaded by the Bluetooth handheld device in real time.

300833B2DDD9014000000000

E200513628120230245017F5

E20000175709010726600D0D

E20000165510019327200A22

AAAA13DA2141970646455443

FFFF0001